

Wireless USB Expresscard

User's Manual

ABOUT THIS MANUAL

This manual is designed for use with the Wireless USB Expresscard. Information in this document has been carefully checked for accuracy; however, no guarantee is given to the correctness of the contents. The information in this document is subject to change without notice. The manufacturer does not make any representations or warranties (implied or otherwise) regarding the accuracy and completeness of this document and shall in no event be liable for any loss of profit or any commercial damage, including but not limited to special, incidental, consequential, or other damage.

SAFETY INSTRUCTIONS

Always read the safety instructions carefully:

- Keep this User's Manual for future reference
- Keep this equipment away from humidity
- If any of the following situation arises, get the equipment checked by a service technician:
 - The equipment has been exposed to moisture.
 - The equipment has been dropped and damaged.
 - The equipment has obvious sign of breakage.
 - The equipment has not been working well or you cannot get it to work according to the User's Manual.

COPYRIGHT

This document contains proprietary information protected by copyright. All right are reserved. No part of this manual may be reproduced by any mechanical, electronic or other means, in any form, without prior written permission of the manufacturer.

TRADEMARKS

All trademarks and registered trademarks are the property of their respective owners or companies.

Table of Contents

- 1. Introduction.....1**
 - Features.....2
 - Package Contents.....2
 - System Requirements.....2
 - Applicable for Serial Products of WUSB2

- 2. Installation3**
 - On Windows XP3
 - On Windows Vista.....6

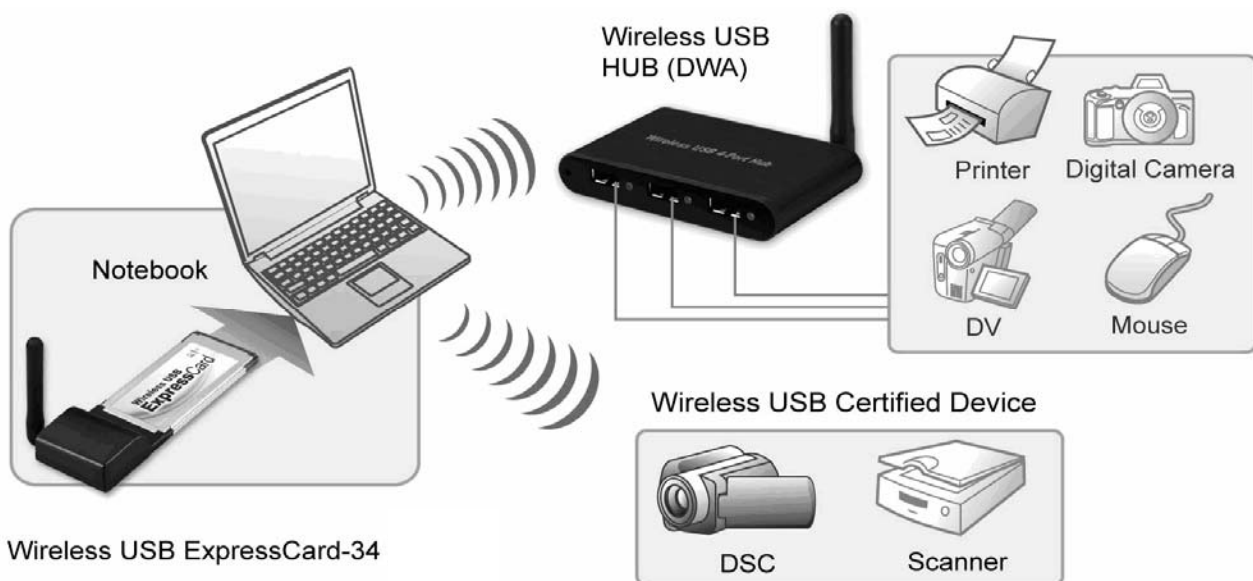
- 3. Troubleshooting..... 11**

- 4. Specifications..... 15**

- 5. Regulatory Compliance..... 16**
 - CE..... 16
 - WEEE Information 16

1. Introduction

This **Wireless USB Expresscard** enables you to access your USB devices without limitation caused by wire. This Dongle is designed to adapt your regular USB 2.0 interface to a Wireless USB interface. Simply plug this adapter to your expresscard socket then the notebook turns into a wireless USB enabled platform, access your wireless USB devices such as printer, scanner freely without boundary up to 10 meters. Just plug the dongle in, then enjoy the freedom and take the advantage of operation wirelessly with the latest Wireless USB technology.



Wireless USB ExpressCard-34

*DWA (Device Wire Adapter)

Features

- Connect USB devices wirelessly
- No more wires , and less cable cutter
- Transmission speeds of up to 480Mbps
- Operation range up to 10 meter (Ideal distance : 3 meters)
- Support USB bus power low power use
- UWB (Ultra-Wide Band) technology use

Package Contents

- Wireless USB Expresscard x1
- CD (Driver and User's Manual) x1
- Quick Installation Guide x1

System Requirements

- Windows® XP SP2, Vista™ 32/64-bit

Applicable for Serial Products of WUSB

- Wireless USB 1 – Port Hub
- Wireless USB 4 – Port Hub
- Wireless USB Display Adapter
- Wireless USB Enclosure
- Wireless USB Docking

Note

Environmental factors will affect wireless signal range vary. Actual wireless performance depends on lots of factors, including wireless distance, network condition, operation system, hardware environment, actual data throughput and else.

2. Installation

On Windows XP

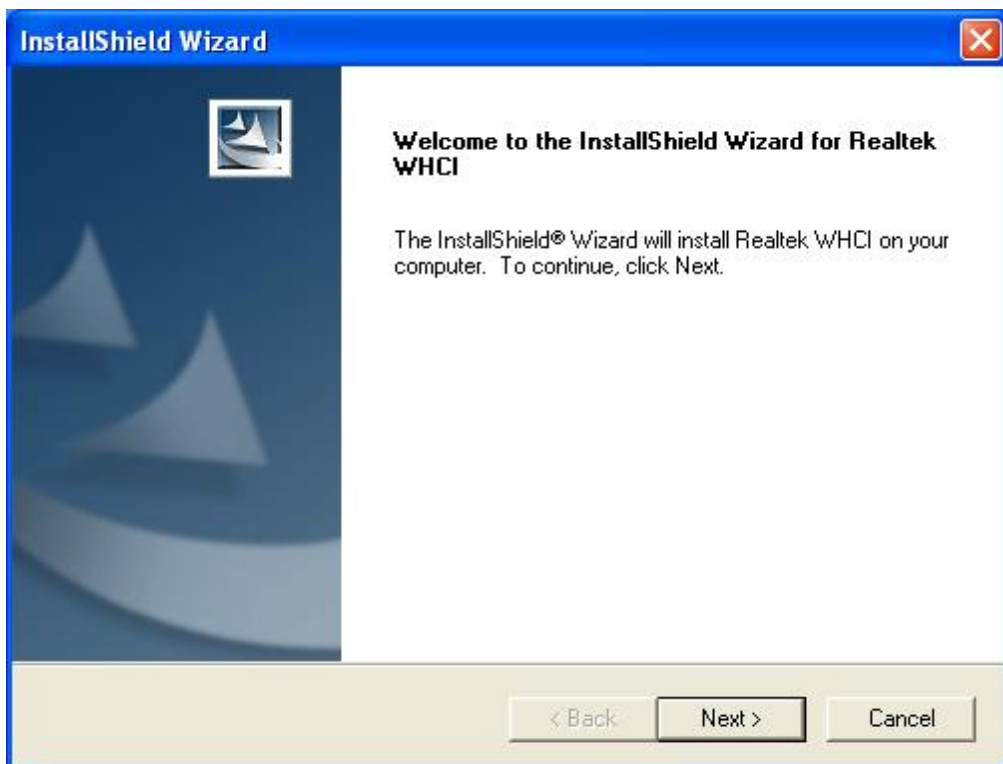
Caution: DO NOT connect the product to your computer before installing the driver on the provide CD.

To install Wireless USB Expresscard Driver

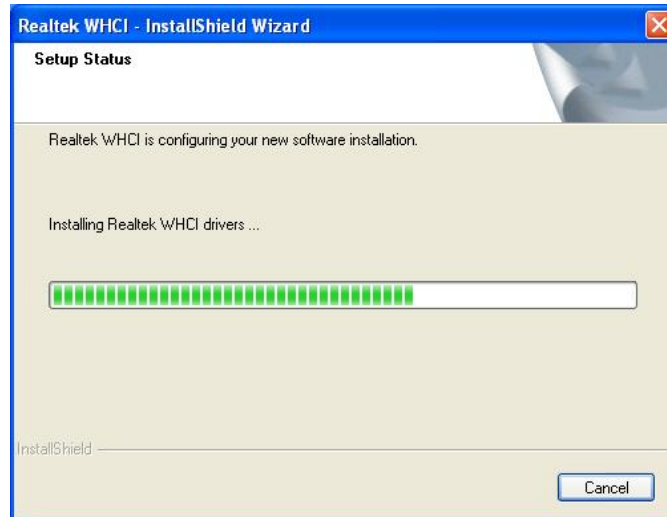
1. Insert the provided CD into your disc drive and the installer program will run automatically when the **Wireless USB Expresscard** CD is inserted, and you may see the screen as below. Please click **Install** to start the Wireless USB Driver install.

If the installer program doesn't run automatically, please locate and **double-click** on the **Autorun.exe** file in the CD to launch the install program.

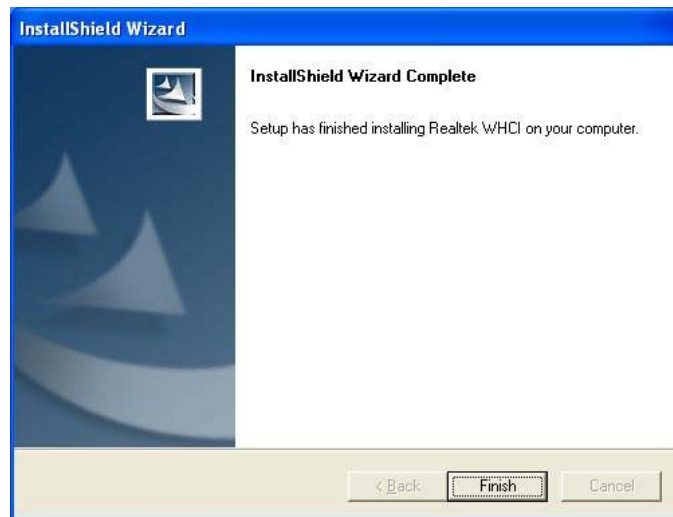
2. When you see the **InstallShield Wizard for Realtek WHCI** screen as below, just click on **Next** anyway



- Please wait while to install the **Realtek WHCI** setup.



- Please click on **Finish** to complete the installation of **Realtek WHCI**.



- Now you have completed the installation of **Wireless USB Host Expresscard**. And you may find the icon of **Wireless USB Manager** of below in red mark at the notification area. The Icon color in gray means the status of before makes wireless connection.



- Please prepare **Wireless USB Device**, such as Wireless USB Hub, Wireless USB Display Adapter or Wireless USB Enclosure ...etc, to make the **wireless connection** with Wireless USB Host Dongle. And then you may start to enjoy using your device wireless.

Note : About the way of **wireless connection** between Wireless USB Host Adapter and Wireless USB device, please refer to the next page of **To Make Cable Association**.

To Make Cable Association

You will need to associate your Wireless USB device with the host adapter, so the device can be recognized and connected.

1. Both of **Wireless USB Host & Wireless USB Device** driver installation complete is necessary before you start to make cable association.
2. Get started by **plugging** your **Wireless USB host adapter** into an available expresscard /34 port on your notebook first and then **Power on** your Wireless USB device after.
3. Using a **USB Type A to Mini B cable**, connect the wireless device to the computer.
4. **Remove the USB Cable** on you Wireless USB device and you may find the **Wireless USB Manager** color in white, it means the status of device recognized and connected.



5. **Right-click** Wireless USB Manager and selects **UWB Manager**.



6. The icon in **Green** represents association successful, and now you may start to enjoy using your device wirelessly.



On Windows Vista

Caution: DO NOT connect the product to your computer before installing the driver on the provide CD.

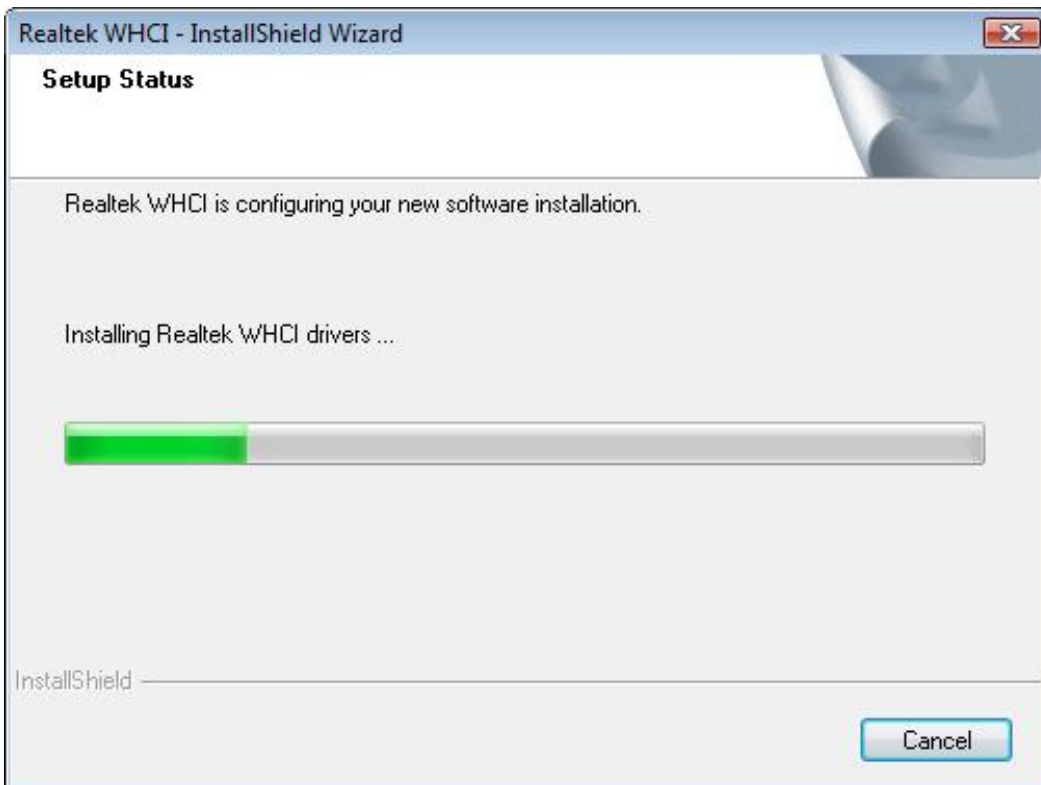
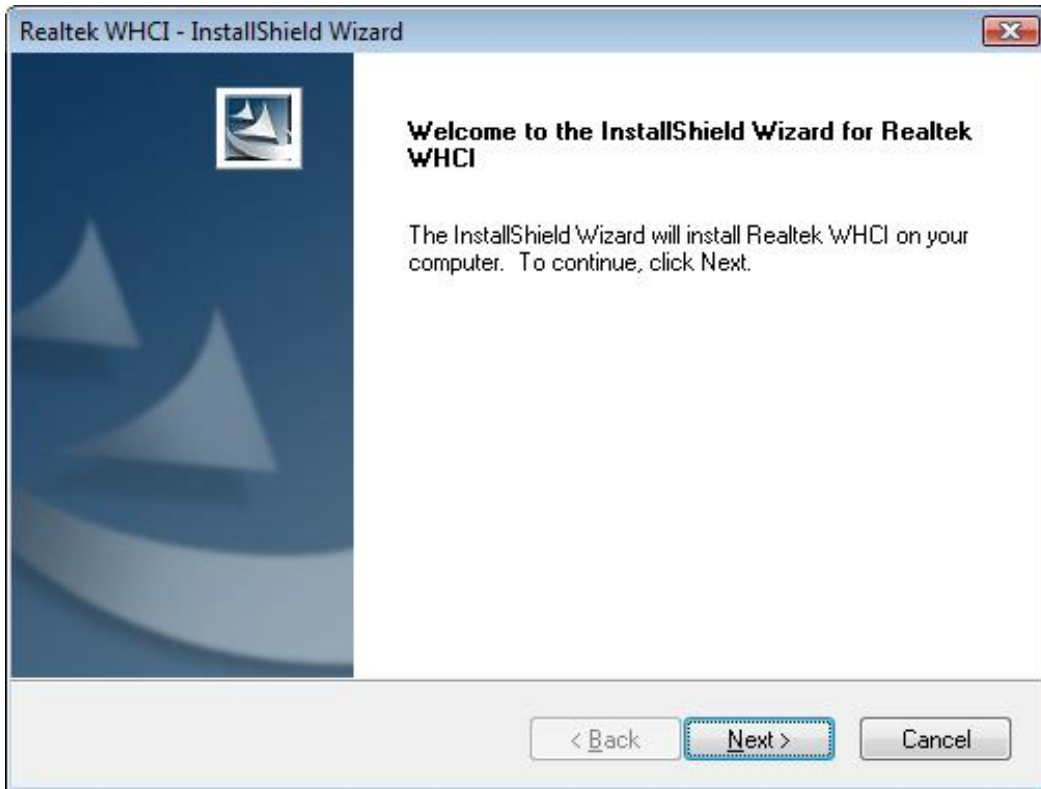
To install Wireless USB Expresscard Driver

1. Insert the provided CD into your disc drive and installer program will run automatically when the **Wireless USB Expresscard** CD is inserted. Please click on **Run Autorun.exe** to execute the installer program.

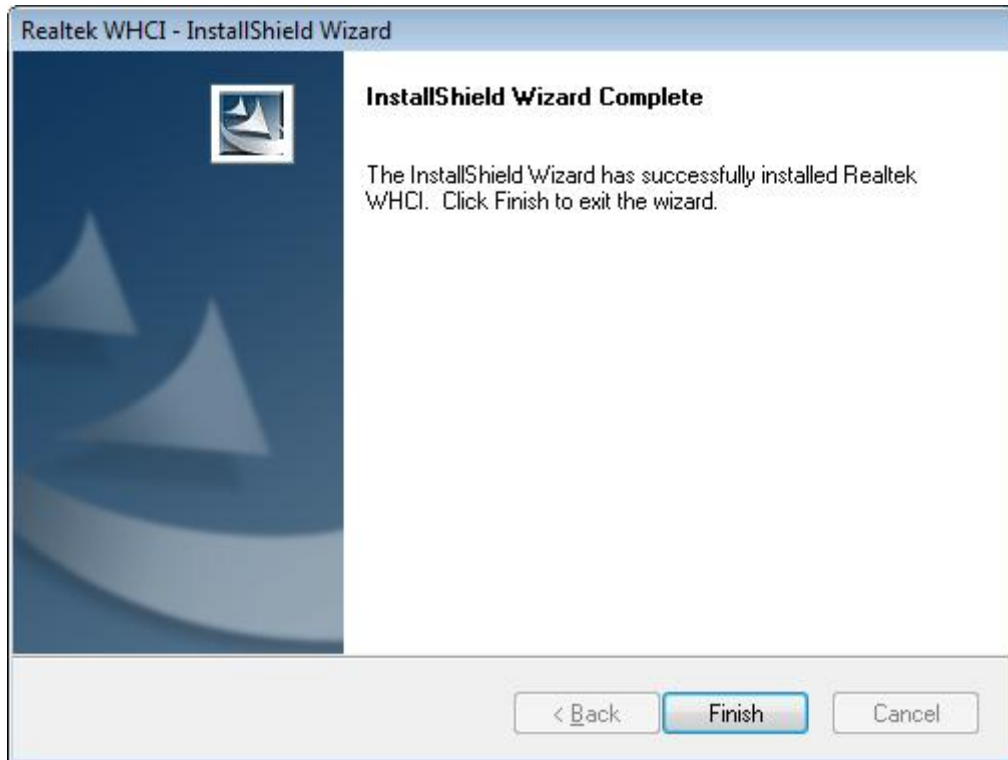


If the installer program doesn't run automatically, please locate and double-click on the **Autorun.exe** file in the CD to launch the install program.

2. When you see the **Realtek WHCI - InstallShield Wizard** screen as below, just click on **Next** anyway



3. Please click on **Finish** to exit the wizard and complete the installation of **Realtek WHCI**.



4. Now you have completed the installation of **Wireless USB Host Expresscard**. And you may find the icon of **Wireless USB Manager** of below in red mark at the notification area. The Icon color in gray means the status of before makes wireless connection.



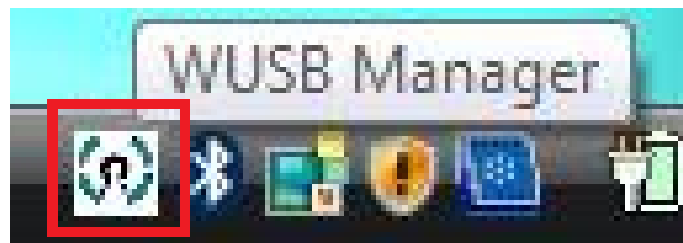
5. Please prepare **Wireless USB Device**, such as Wireless USB Hub, Wireless USB Display Adapter or Wireless USB Enclosure ...etc, to make the **wireless connection** with Wireless USB Host Dongle. And then you may start to enjoy using your device wireless.

Note : About the way of **wireless connection** between Wireless USB Host Adapter and Wireless USB device, please refer to the next page of **To Make Cable Association**.

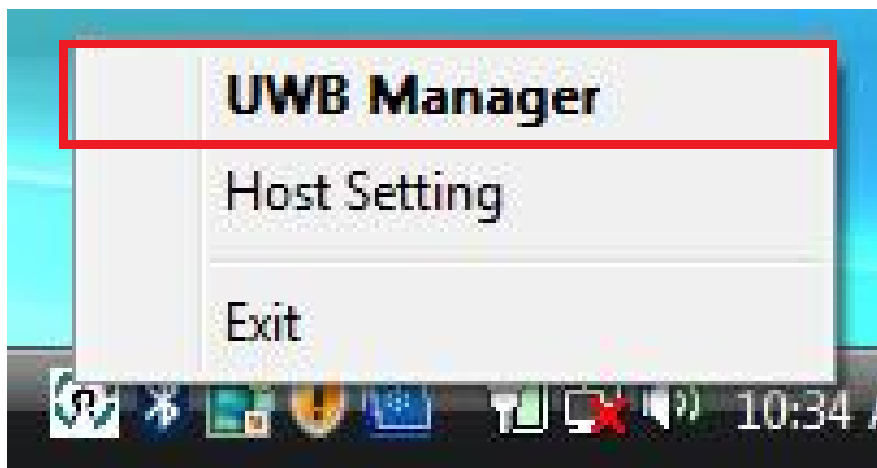
To Make Cable Association

You will need to associate your Wireless USB device with the host adapter, so the device can be recognized and connected.

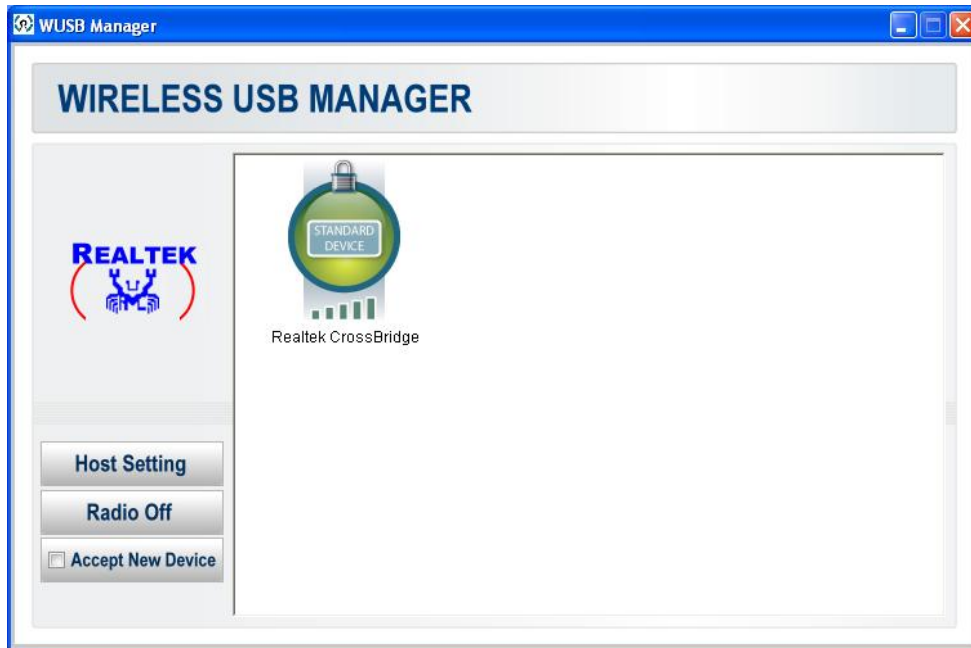
1. Both of **Wireless USB Host & Wireless USB Device** driver installation complete is necessary before you start to make cable association.
2. Get started by **plugging** your **Wireless USB host adapter** into an available expresscard /34 port on your notebook first and then **Power on** your Wireless USB device after.
3. Using a **USB Type A to Mini B cable**, connect the wireless device to the computer.
4. When the **Wireless USB Cable Association** screen prompted as below, please Click on **Accept Association** and **OK** for **Association successful**.
5. **Remove the USB Cable** on you Wireless USB device and you may find the **Wireless USB Manager** color in white, it means the status of device recognized and connected.



6. **Right-click** Wireless USB Manager and selects **UWB Manager**.



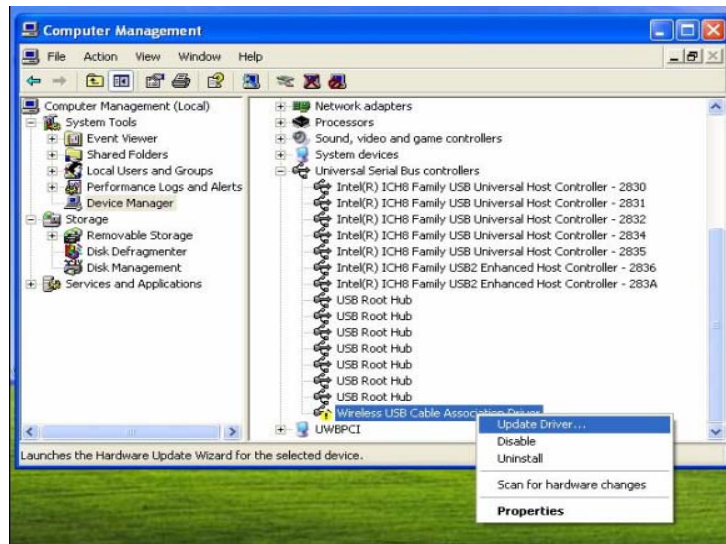
7. The icon in **Green** represents association successful, and now you may start to enjoy using your device wirelessly.



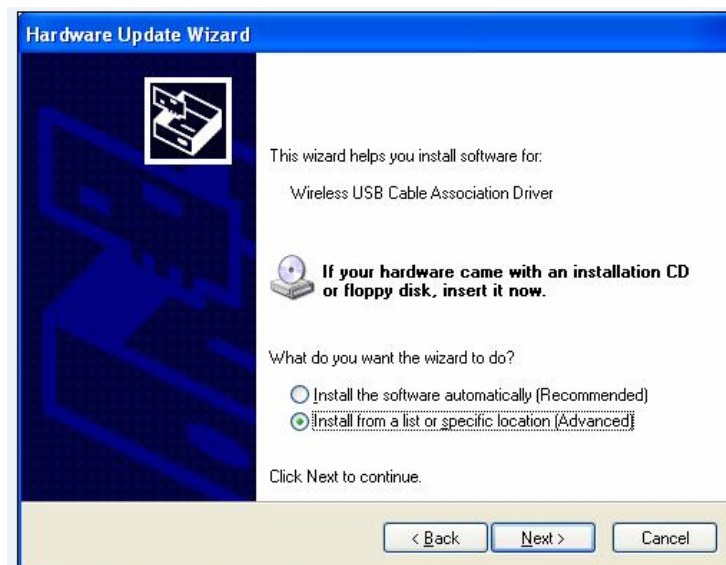
**Actual strings depend on your operation system. These screen shots are from Windows Vista 32-bit and might vary slightly for each operation system.*

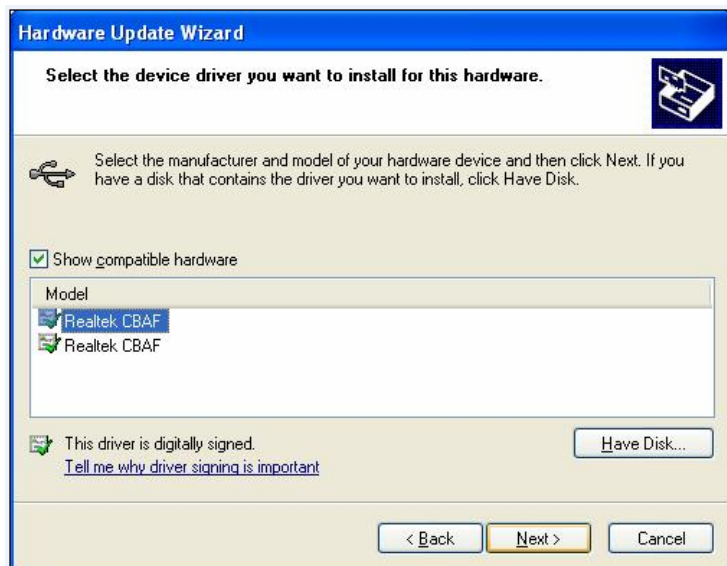
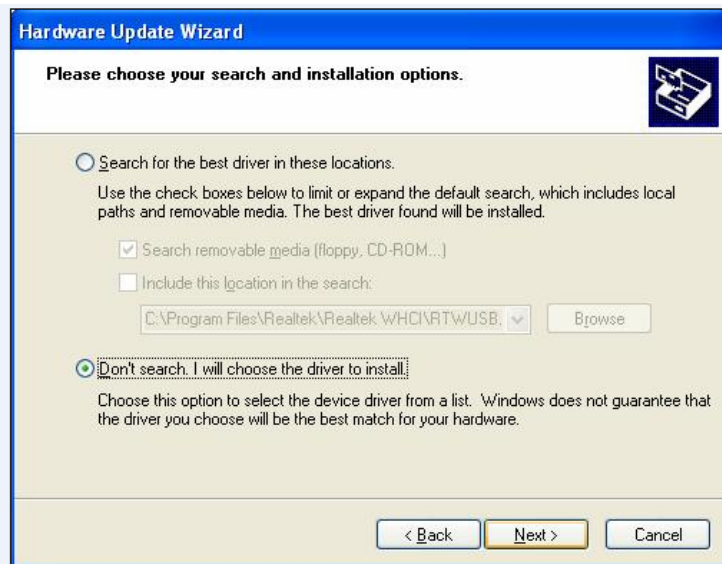
3. Troubleshooting

Problem	Solution
Can't make the association between Wireless USB ExpressCard and Wireless USB device	<ul style="list-style-type: none"> ■ Make sure the installation of Wireless USB ExpressCard and Wireless USB device have been completed. ■ Make sure you have remove USB cable from the Wireless USB device after cable association. ■ Reinsert the Wireless USB ExpressCard and reboot it after cable association.
Can't find the association between Wireless USB Expresscard and WUSB Device after installing drivers.	<ul style="list-style-type: none"> ■ Use the different USB port from Wireless USB Host ever used to make an association via USB cable. ■ After installed and inserted Wireless USB Expresscard, please remove Wireless USB Dongle and make an association with Wireless USB device by USB cable. The system may suppose that Wireless USB Device has been associated by WUSB Host and the pop-up message will appear as below. <div data-bbox="700 1265 1300 1541" data-label="Image"> <p>The image shows a yellow notification bubble from the Windows taskbar. The title bar of the bubble reads 'Wireless USB Manager' and the main text inside says 'Known device found'. The bubble is positioned over the system tray area, which contains several icons including network, volume, and power.</p> </div> <p>Open Device Manager in the computer management and have to update the driver below Wireless USB Cable Association Driver manually.</p>

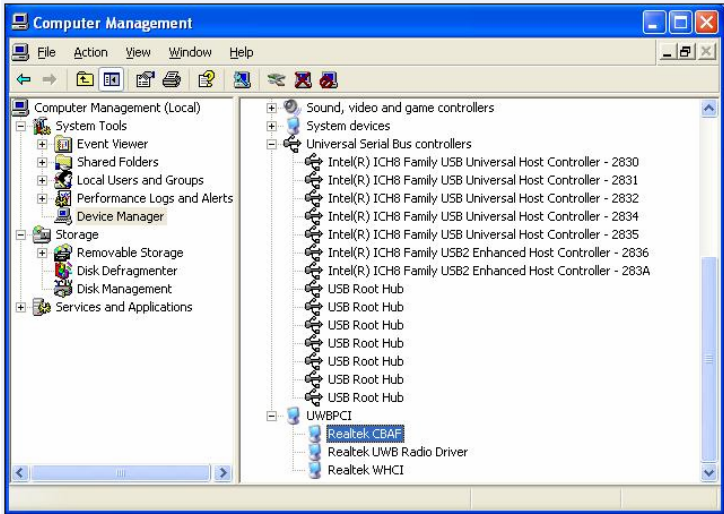


Please refer to the instructions as below print screens.





* Generally, both of Realtek CBAF items are the same, please try the another if the item you chose couldn't work.



Now can get the successful association between Wireless USB Expresscard Adapter and Wireless USB device.

4. Specifications

Item	Description
Interface	<ul style="list-style-type: none"> ■ Upstream : Expresscard ■ Downstream : Wireless USB
Form Factor	Expresscard / 34
Antenna	Dipole Antenna
Power Mode	Bus-powered
Power Consumptions	<ul style="list-style-type: none"> ■ Operating Power : 300 mA ■ Suspend Mode Power : 45 mA
PHY Data Rate	Support all WiMedia data rates from 53.3Mbps to 480Mbps
PHY Compliance	WiMedia 1.0 MAC & 1.1 PHY compliant & Support for 1.2 PHY
Frequency Range	3.1GHz to 4.8GHz ; UWB PHY Supports Band Groups 1
RF modulation type	Compliant to WiMedia MultiBand OFDM PHY Technical Specification Release 1.1
Operational Range	Up to 10 meters (Ideal distance : 3 meters)
Operation System Support	Windows® XP SP2, Vista™ 32/64-bit
Working Environment:	<ul style="list-style-type: none"> ■ Operation temperature: 10 ~ 40 °C ■ Storage temperature: -10 ~ 60 °C
Dimensions	112 (L) X 34 (W) X 14 (H) (except the Antenna) mm
Weights	25 g
Housing	PC (Clear, Plastic) , SUS301 PF 30 (Metal)
Certification	CE0560i

*Specifications are subject to change without further notice

5. Regulatory Compliance

CE

This equipment is in compliance with the requirements of the following regulations: EN 55 022: EMC Directive 2004/108/EC (EN55022/EN55024)

WEEE Information

For EU (European Union) member users:

According to the WEEE (Waste electrical and electronic equipment) Directive, do not dispose of this product as household waste or commercial waste. Waste electrical and electronic equipment should be appropriately collected and recycled as required by practices established for your country. For information on recycling of this product, please contact your local authorities, your household waste disposal service or the shop where you purchased the product.

