

GPS Information User Manual

Ver. 1.02

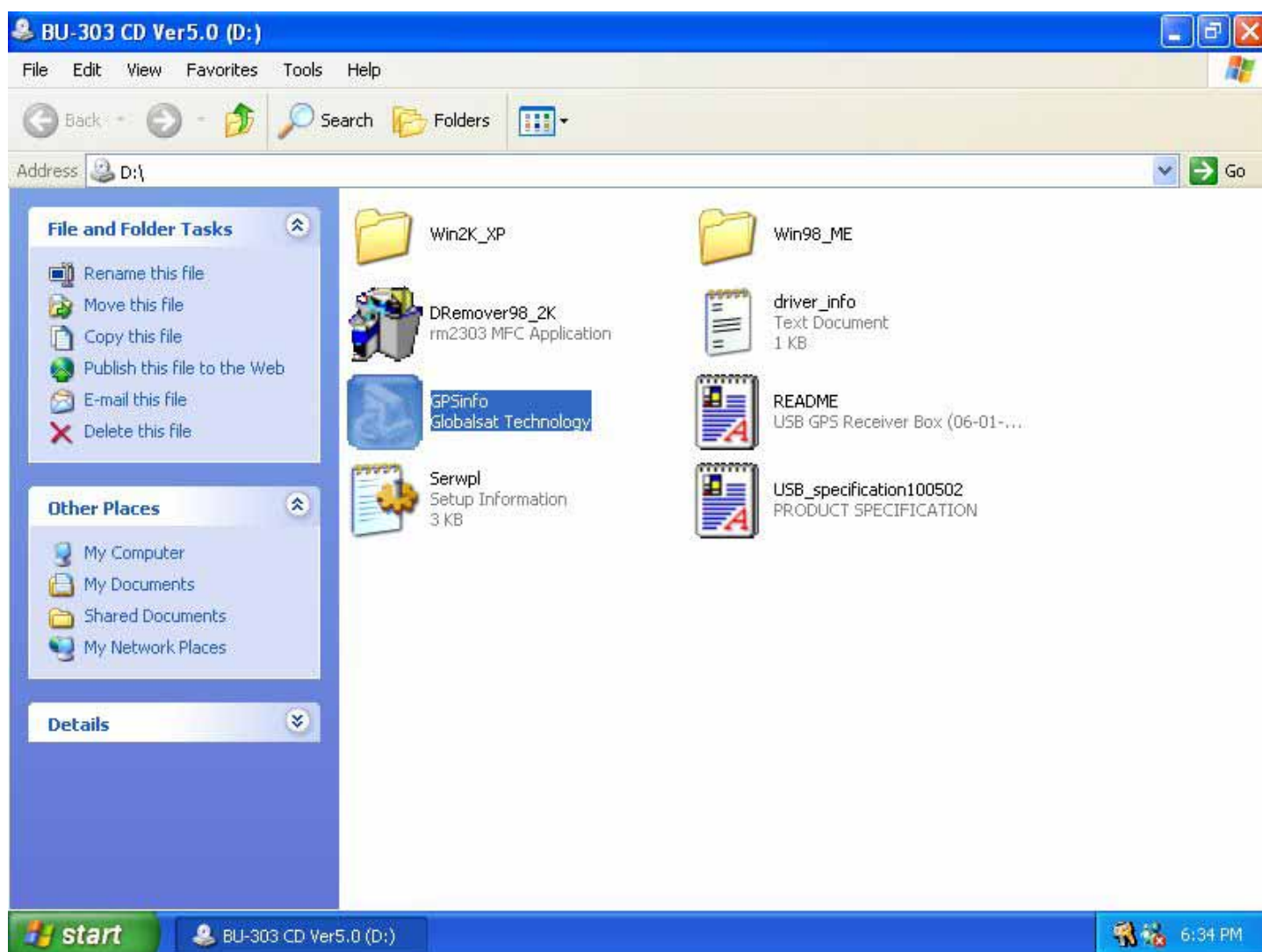
GPS Information Installation Procedure

Users can use the GPSinfo.exe program to verify that the GPS is actually configured properly and working. Also, users can use the GPSinfo.exe program to enable WAAS/EGNOS and power saving mode.

* Note: If you are installing GPS Information onto both PC and PDA, make sure your PDA is properly connected to the PC before installation begins.

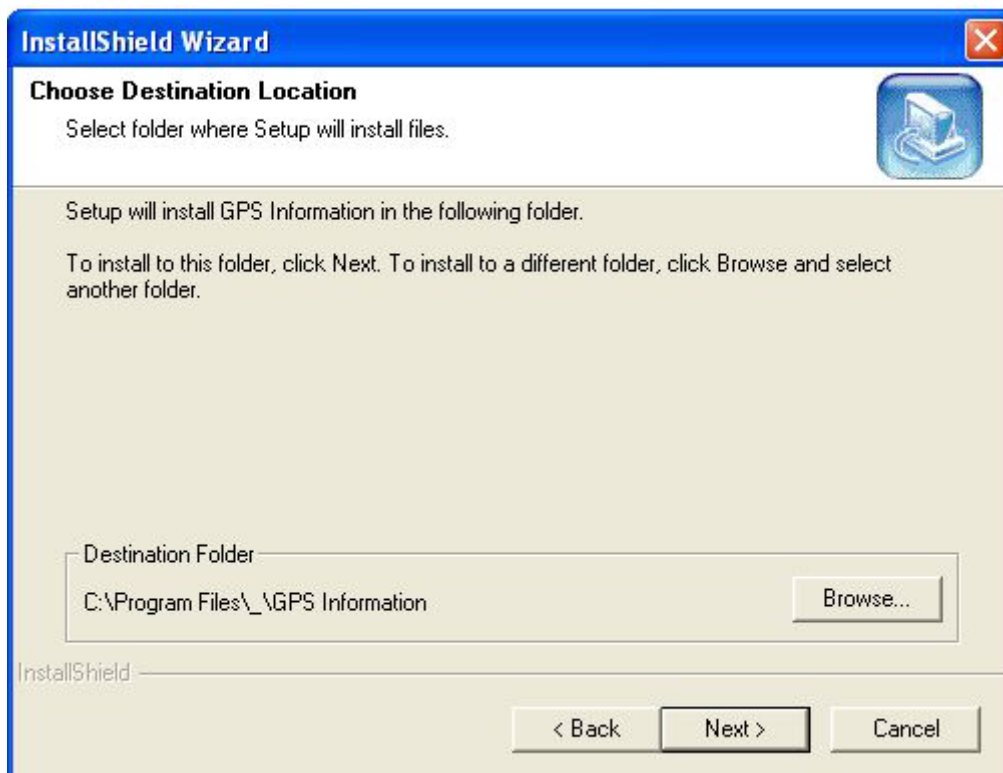
STEP 1.

Insert the Installation Disc into CD-Rom drive and execute the “Gpsinfo.exe” file.



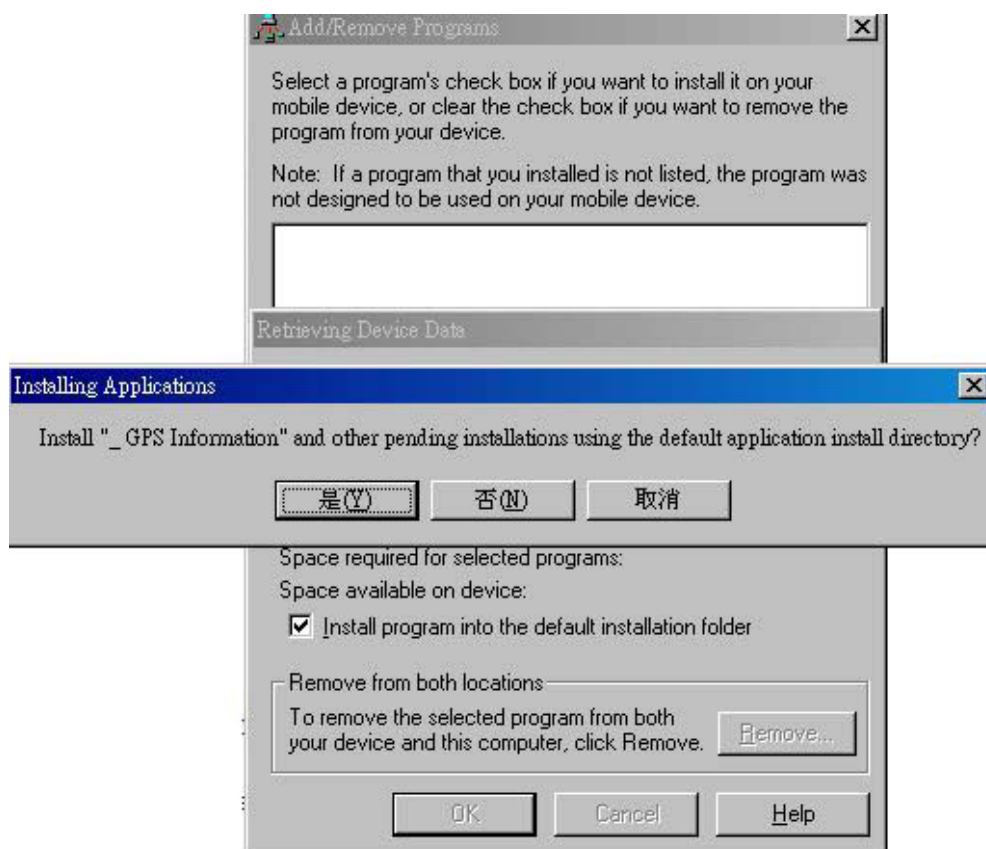
STEP 2.

Follow the given instructions to complete the installation.



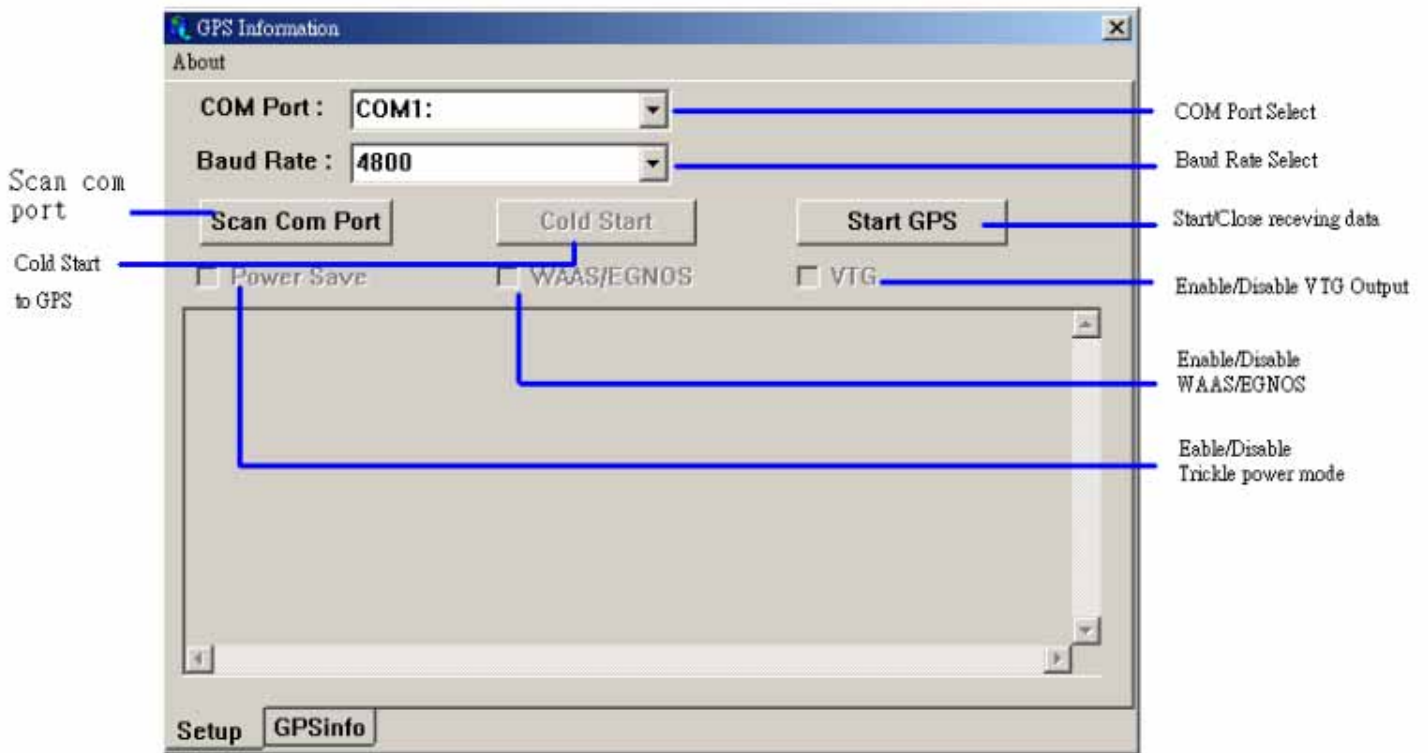
STEP 3.

Once the installation is completed, installation of **GPS Information** onto PDA device will be launched automatically.

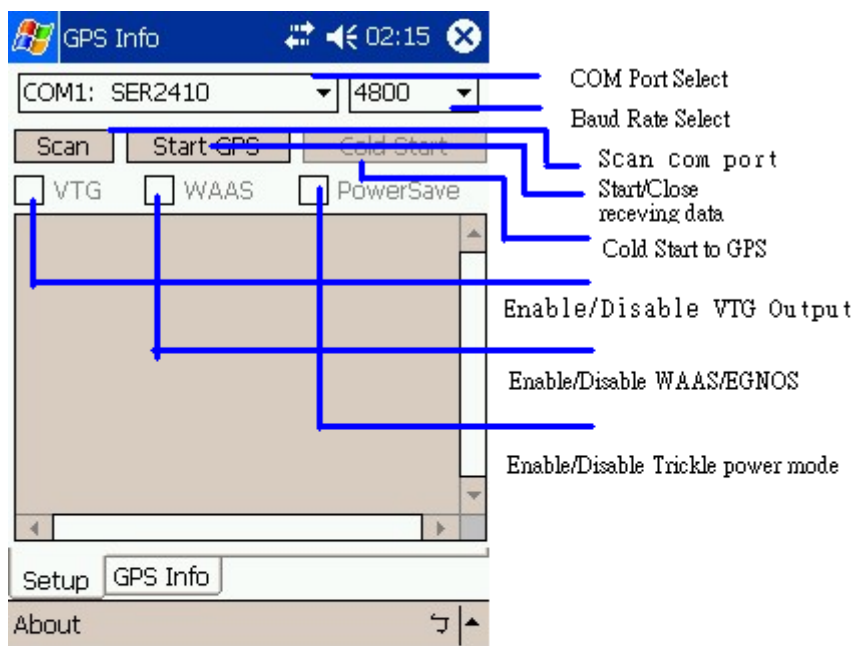


GPS Information Screen Shots

1. Setup Window



(NoteBook PC Screen Shot)



(PocketPC Screen Shot)

"**Scan Com Port**" - Scan all available communication port for GPS reception

"**Cold Start**" - Cold start the GPS receiver

"**Power Save**" - Check the box to enable/disable the Power Save Mode (the option is available only when a GPS device is found)

"**Tab Menu**" - Switch between Setup and GPSINFO windows

"**Com Port Selection**" - Select the appropriate communication port where GPS receiver is configured (it maybe necessary to try several communication ports until the right one is found)

"**Baud Rate Selection**" - Select the appropriate transferring rate (Please set the baud rate at 4800)

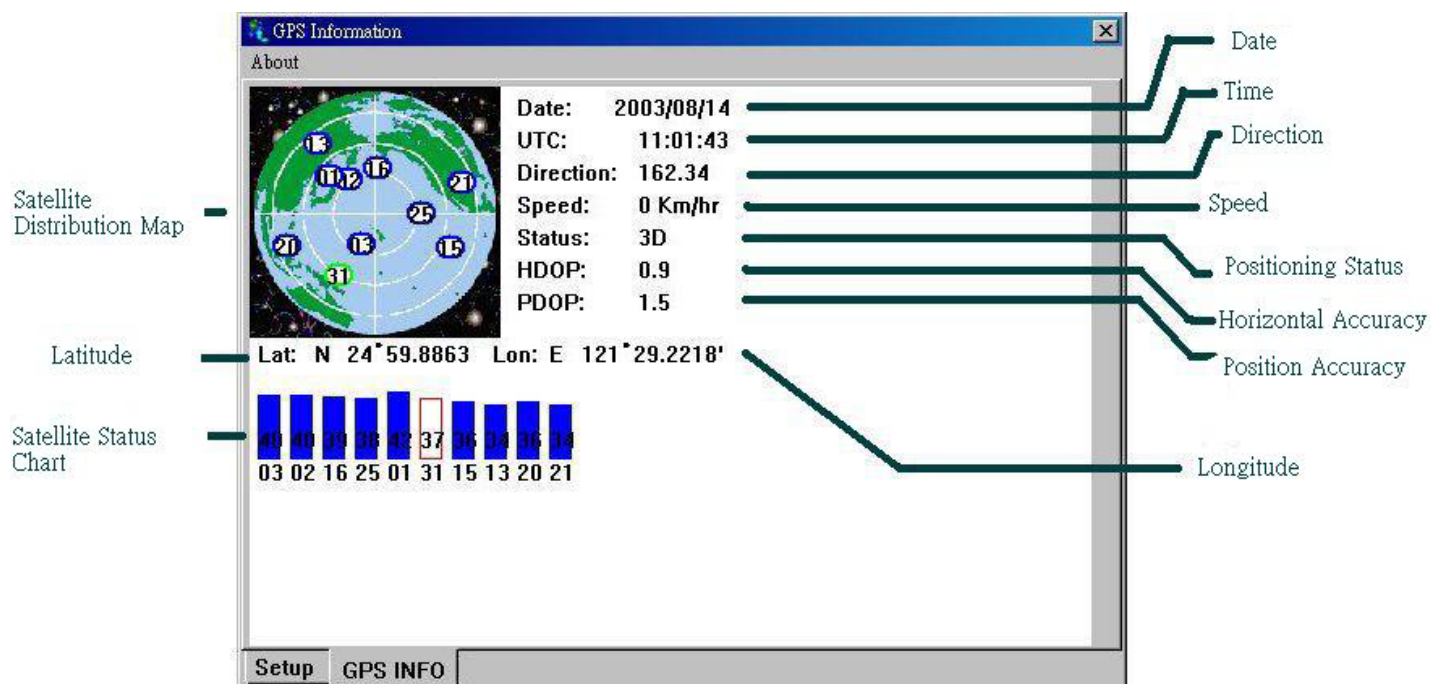
"**Start GPS button**" - Turn on/off the GPS device

"**VTG check box**" - Some navigation or map software requires to receive VTG data output for during operation. Check the box to activate the VTG data output.

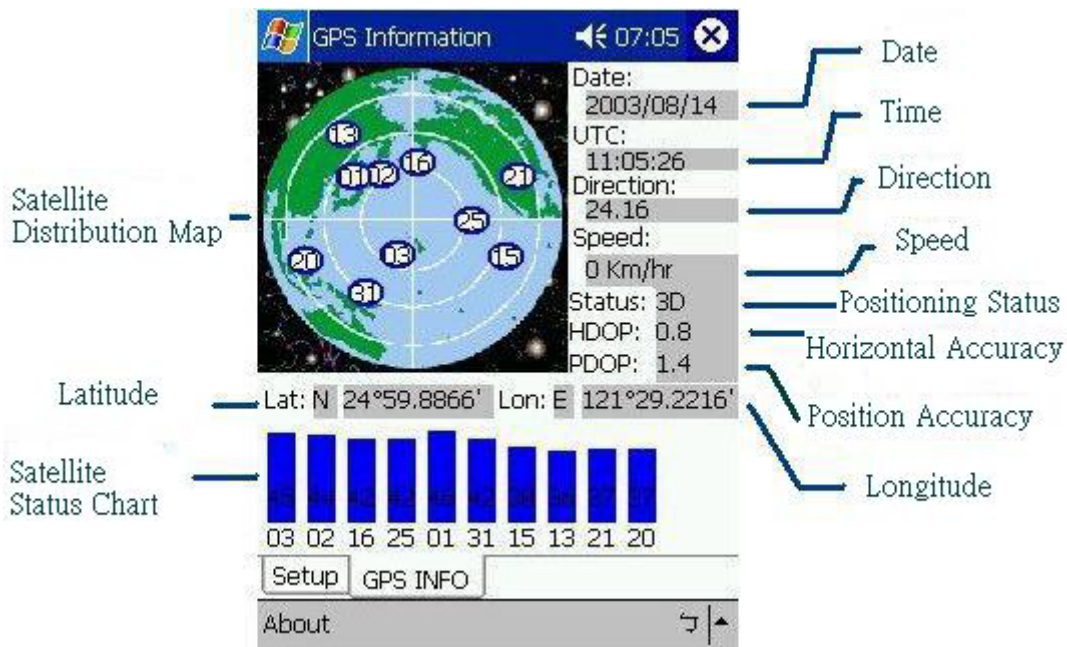
"**WAAS/EGNOS**" - Check the box to activate WAAS/EGNOS in order to increase the accuracy of positioning

"**Main GPS data Window**" - Display data received by GPS device.

2. GPS Info Window



(NoteBook PC Screen Shot)



(PocketPC Screen shot)

“**Satellite Distribution Map**” – Display the position of all connected Satellites

1. A unique number is assigned to each satellite.
2. Red circle indicates that the satellite location is known from almanac information; however, the satellite is not currently being tracked.
3. Green circle indicates that the satellite is being tracked; however, it is not being used in the current position solution.
4. Blue circle indicates that is being tracked and is being used in the current position.

“**Latitude**” – User’s current latitude is displayed in N/S degree (North/South Hemisphere) format

“**Satellite Status Chart**” – display the status of each connected satellite

1. The number under each bar marks corresponding Satellite, and the height of each bar represents the strength of the satellite.
2. Red bar indicates that the satellite location is known from almanac information; however, the satellite is not currently being tracked.
3. Green solid bar indicates that the satellite is being tracked; however, it is not being used in the current position solution.
4. Blue bar indicates that the tracked and is being used in the current position.

“**Date**” – display the current date in (dd/mm/yy) format.

“**Time**” – display the current (UTC) time in (hh:mm:ss) format.

“**Direction**” – display the current direction from 000.0° to 359.9°

“**Speed**” – Display the current moving speed in km/hour

“**Positioning Status**”- Three Modes

1. No Fix
2. 2D Positioning

3. 3D Positioning

“**Horizontal Accuracy**” - Range from 0.5 to 99.9, the smaller the better

“**Position Accuracy**” - Range from 0.5 to 99.9, the smaller the better

“**Longitude**” – Display current longitude in E/W (East/West Hemisphere) Time (hhmmss)

GPS Information Instructions

- 1 Make sure that the GPS device is properly inserted.
- 2 Start GPS Information Software.
- 3 Choose and select the proper communication port. (It might be necessary to try each available port to find the right one since the default communication port varies according to different hardware device.)
- 4 Click “Start GPS button” to activate the GPS receiver.
- 5 Upon successful connection, GPS output data should be displayed in “**Main GPS data Window**”. If no data is observed, make sure the GPS receiver is working and properly inserted. Otherwise choose another communication port.
- 6 Satellite status can be observed in the “**GPS Info Window**”. Use the “**Tab Menu**” to switch between Setup window and GPS info window.
- 7 Please make sure to de-activate the GPS device before exiting this program.